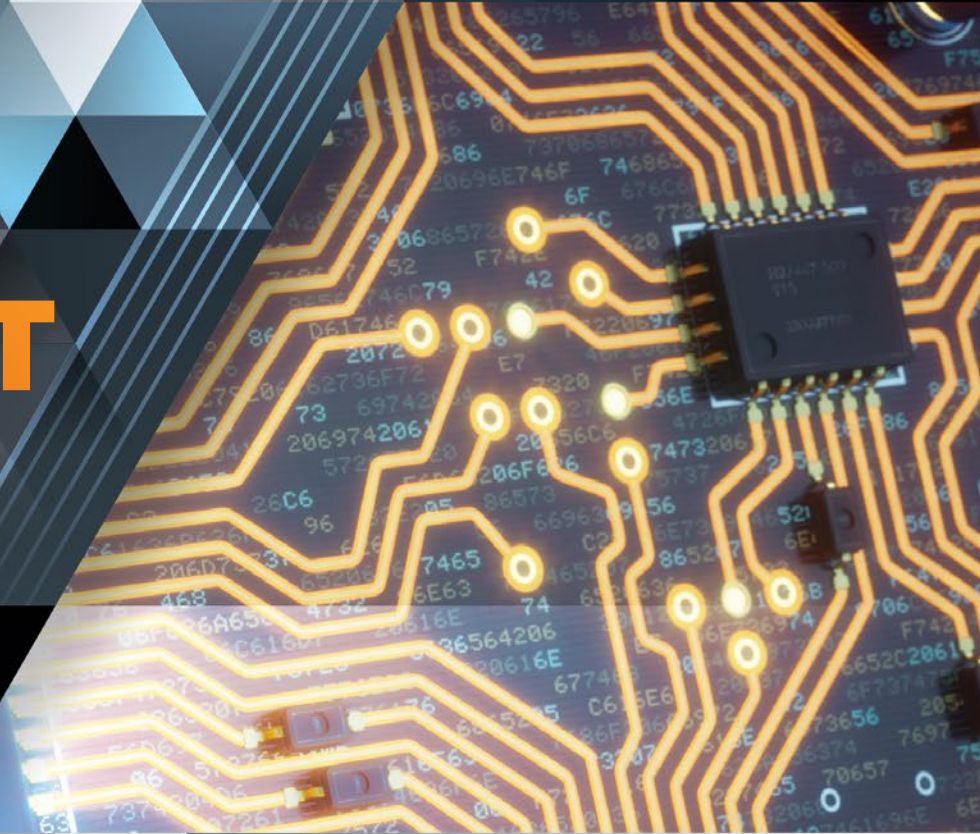


isola[®]
THE BASE FOR INNOVATION[™]

PRODUCT GUIDE



**High performance laminate
and prepreg materials for
PCB manufacturing.**



LAMINATES & PREPREGS

LEGACY

IS410
Lead Free, High Tg Epoxy Laminate and Prepreg

Tg: 180°C **Dk:** 3.97
Td: 350°C **Df:** 0.020

DE104
Standard Tg Laminate and Prepreg

Tg: 135°C **Dk:** 4.37
Td: 315°C **Df:** 0.022

IS680
Very Low Loss Material

Tg: 200°C **Dk:** 2.80-3.45
Td: 360°C **Df:** 0.0025-0.0035

185HR
Standard Loss, Thermally Robust Epoxy Laminate and Prepreg

Tg: 180°C **Dk:** 4.01
Td: 340°C **Df:** 0.020

IS400
Lead Free, Mid Tg Epoxy Laminate and Prepreg

Tg: 150°C **Dk:** 3.90
Td: 330°C **Df:** 0.022

NO FLOW

FR406N
No-Flo® and Lo-Flo® Specialty Prepreg

Tg: 170°C **Dk:** 4.3
Td: 300°C **Df:** 0.025

P25N
Polyimide UL HB No Flow Prepreg

Tg: 250°C **Dk:** 3.67
Td: 383°C **Df:** 0.018

IS680AG
Very Low Loss Material

Tg: 200°C **Dk:** 3.00/3.38/3.45/3.48
Td: 360°C **Df:** 0.0020 - 0.0029

IS550H
Low CTE, Very High Thermal Reliability Laminate and Prepreg

Tg: 200°C **Dk:** 4.43
Td: 400°C **Df:** 0.016

370HR
Standard Loss, Thermally Robust Epoxy Laminate and Prepreg

Tg: 180°C **Dk:** 4.04
Td: 340°C **Df:** 0.021

HIGH TEMPERATURE

P95/P25
Polyimide UL HB Laminate and Prepreg

Tg: 260°C **Dk:** 3.76
Td: 416°C **Df:** 0.017

P96/26
Polyimide UL V-0 Laminate and Prepreg

Tg: 260°C **Dk:** 3.76
Td: 396°C **Df:** 0.017

TERRAGREEN® (RF/MW)
Very Low Loss Material

Tg: 200°C **Dk:** 3.45
Td: 390°C **Df:** 0.0032

I-SPEED®
Low Loss, Epoxy Laminate and Prepreg

Tg: 180°C **Dk:** 3.64
Td: 360°C **Df:** 0.0060

FR408HR
Lead Free, Mid Loss Laminate and Prepreg

Tg: 190°C **Dk:** 3.68
Td: 360°C **Df:** 0.0092

I-TERA® MT40 (RF/MW)
Very Low Loss Material

Tg: 215°C **Dk:** 3.38/3.45/3.60/3.75
Td: 360°C **Df:** 0.0028 - 0.0035

I-TERA® MT40
Very Low Loss Laminate and Prepreg

Tg: 215°C **Dk:** 3.45
Td: 360°C **Df:** 0.0031

TERRAGREEN®
Very Low Loss Laminate and Prepreg

Tg: 200°C **Dk:** 3.44
Td: 390°C **Df:** 0.0039

ASTRA® MT77
Ultra Low Loss, RF/MW Laminate and Prepreg

Tg: 200°C **Dk:** 3.00
Td: 360°C **Df:** 0.0017

TACHYON® 100G
Very Low Loss Laminate and Prepreg

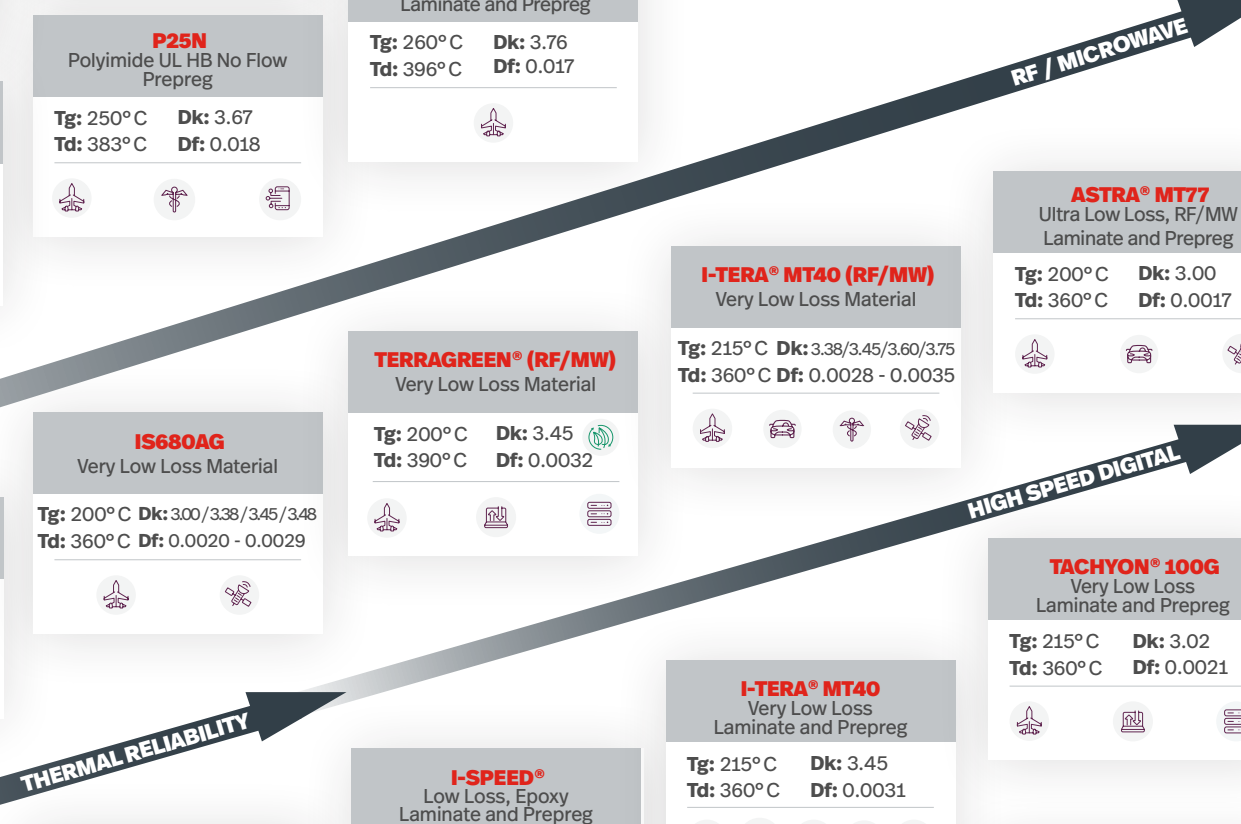
Tg: 215°C **Dk:** 3.02
Td: 360°C **Df:** 0.0021

TERRAGREEN® 400G
Extremely Low Loss Laminate and Prepreg

Tg: 210°C **Dk:** 3.05
Td: 400°C **Df:** 0.0018

ATTRIBUTES

	HALOGEN FREE	Tg	Td	T-260	T-288	Dk		Df		TYPICAL PEEL STRENGTHS /	MOISURE ABSORPTION	UL	CTI
		°C	°C	min	min	2GHz	10GHz	2GHz	10GHz				
RF/MICROWAVE	IS680	200	360	≥60	≥60	2.80 to 3.45	2.80 to 3.45	0.0025 to 0.0035	0.0025 to 0.0035	4.01	0.100%	110	2
	IS680 AG	200	360	≥60	≥60	3.00 to 3.45	3.00 to 3.45	0.0020 to 0.0029	0.0020 to 0.0029	4.01	0.100%	110	2
	I-TERA® MT40 (RF/MW)	215	360	≥60	≥60	3.38 to 3.75	3.38 to 3.75	0.0028 to 0.0035	0.0028 to 0.0035	4.00	0.100%	130	3
	TERRAGREEN® (RF/MW)	200	390	≥60	≥60	3.45	3.45	0.0032	0.0032	4.00	0.050%	130	2
	ASTRA® MT77	200	360	≥60	≥60	3.00	3.00	0.0017	0.0017	5.70	0.100%	130	3
HIGH SPEED DIGITAL	IS415	200	370	60	>20	3.72	3.71	0.0120	0.0125	7.00	0.150%	130	1
	FR408HR	190	360	≥60	>30	3.68	3.65	0.0092	0.0095	5.50	0.061%	130	2
	I-SPEED®	180	360	>60	≥60	3.64	3.63	0.0060	0.0071	5.50	0.061%	130	2
	TERRAGREEN®	200	390	≥60	≥60	3.44	3.44	0.0039	0.0039	4.00	0.050%	130	2
	I-TERA® MT40	215	360	≥60	≥60	3.45	3.45	0.0031	0.0031	4.00	0.100%	130	3
	TACHYON® 100G	215	360	≥60	≥60	3.04	3.02	0.0021	0.0021	4.50	0.100%	130	3
THERMAL RELIABLE	TERRAGREEN® 400G	210	400	≥60	≥60	3.05	3.05	0.0018	0.0018	3.50	0.050%	130	2
	IS400	150	330	>60	>10	3.90	3.80	0.0210	0.0260	9.00	0.180%	130	3
	185HR	180	340	60	>15	4.01	3.88	0.0200	0.0236	5.90	0.150%	130	3
	370HR	180	340	60	≥30	4.04	3.92	0.0210	0.0250	7.00	0.150%	130	3
	IS550H	200	400	>60	>60	4.50	4.43	0.014	0.0160	8.20	0.250%	150	3
SPECIALTY PRODUCTS	P95/P25	260	416	≥60	≥60	3.76	3.73	0.0179	0.0210	7.00	0.500%	140	2
	P96/P26	260	396	≥60	≥60	3.76	3.73	0.0179	0.0210	7.00	0.500%	140	4



ACCORDING TO IPC-4101

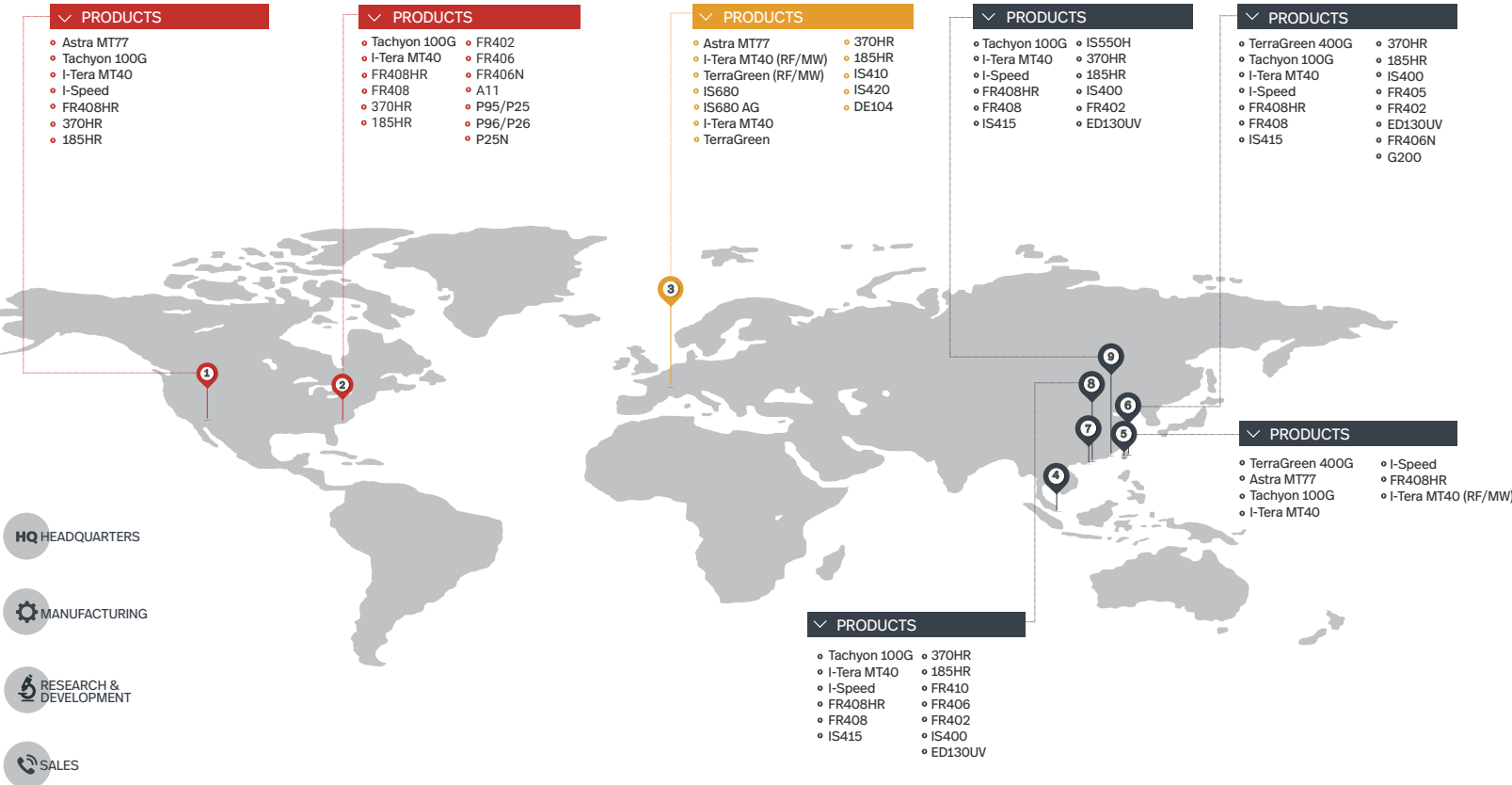
	/40	/41	/97	/98	/99	/101	/102	/126	/129	/134	/140
THERMAL RELIABLE	IS400			●	●	●					
	185HR			●	●	●		●			
	370HR			●	●	●		●			
	IS550H										●
HIGH SPEED DIGITAL	IS415			●	●	●		●			
	FR408HR			●	●	●		●			
	I-SPEED®			●	●	●		●			
	I-TERA® MT40						●				
	TACHYON® 100G						●				
SPECIALTY PRODUCTS	P95/P25	●	●								
	P96/P26	●	●								

ACCORDING TO IPC-4103

	/17	
HIGH SPEED DIGITAL	TERRAGREEN®	●
	I-TERA® MT40	●
	TACHYON® 100G	●
RF/MICROWAVE	IS680	●
	IS680 AG	●
	TERRAGREEN® (RF/MW)	●
	I-TERA® MT40 (RF/MW)	●
	ASTRA® MT77	●

Isola high-performance laminate products feature proprietary resin formulations that are engineered to meet your design specifications and exceed your expectations.

> GLOBAL LOCATIONS



- HQ HEADQUARTERS
- MANUFACTURING
- RESEARCH & DEVELOPMENT
- SALES

<p>NORTH AMERICA</p> <p>1. Chandler, AZ </p> <p>2. Ridgeway, SC </p>	<p>EUROPE</p> <p>3. Düren, DE </p>	<p>ASIA</p> <p>4. Singapore </p> <p>5. Yangmei, TW </p> <p>6. Taoyuan City, TW </p> <p>7. Hong Kong </p> <p>8. Huizhou, CH </p> <p>9. Suzhou, CH </p>
---	---	--

North American Global Headquarters

6565 West Frye Road
Chandler, AZ 85226

480-893-6527

amer.customer.service@isola-group.com

European Regional Headquarters

Isolastrasse 2
D-52353 Düren, Germany

49-2421-8080

emea.customer.service@isola-group.com

Asia Pacific Regional Headquarters

12/F, Kin Sang Commercial Centre, 49 King Yip Street, Kwun Tong, Kowloon, Hong Kong

Phone: 852-2418-1318

apac.customer.service@isola-group.com

